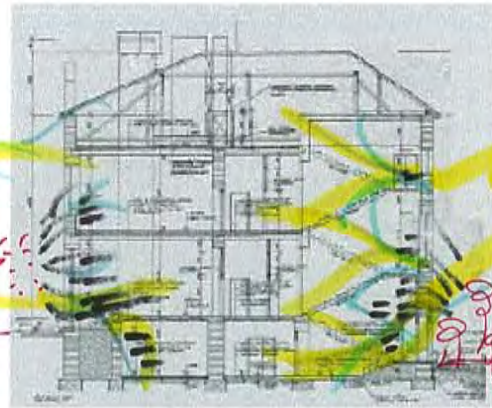
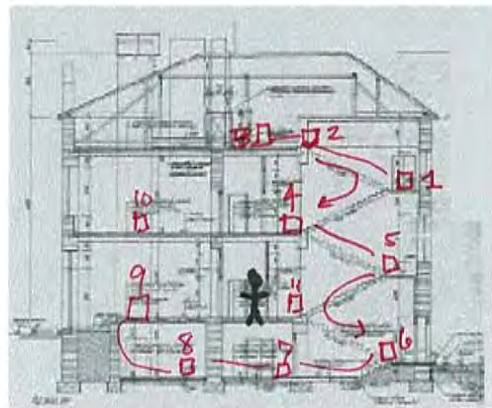


PLANS FOR
OBSERVATION
FROM EXTERIOR



PLANS SHOWING INTRUSION
OF EXTERIOR SOUND

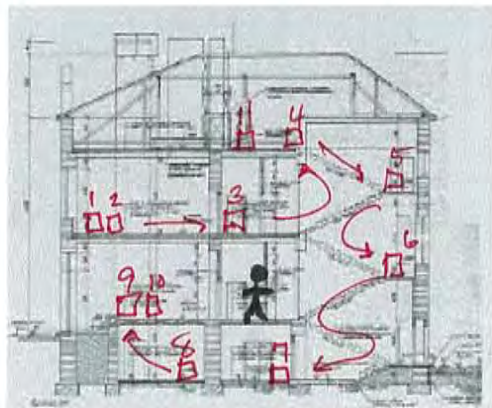


FIXED LISTENER

CHOREOGRAPHY OF MUSICIAN A

- 1 SEMI-PRESENT
- 2 DISTANT
- 3 INAUDIBLE, GHOSTLY
- 4 PRESENT
- 5 VISIBLE
- 6 SUBTERRANEAN

- 7 RESONANT
- 8 MUFFLED
- 9 BEHIND
- 10 ARTICULATE
- 11 PRESENT

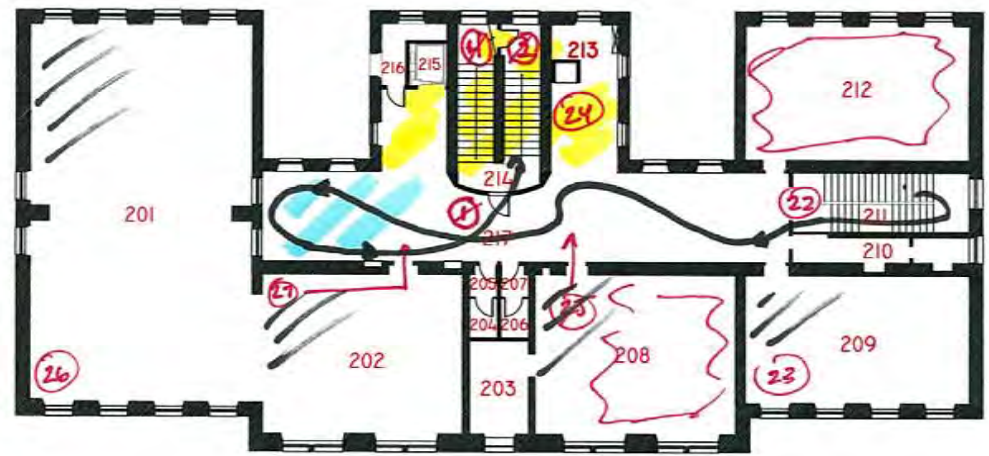
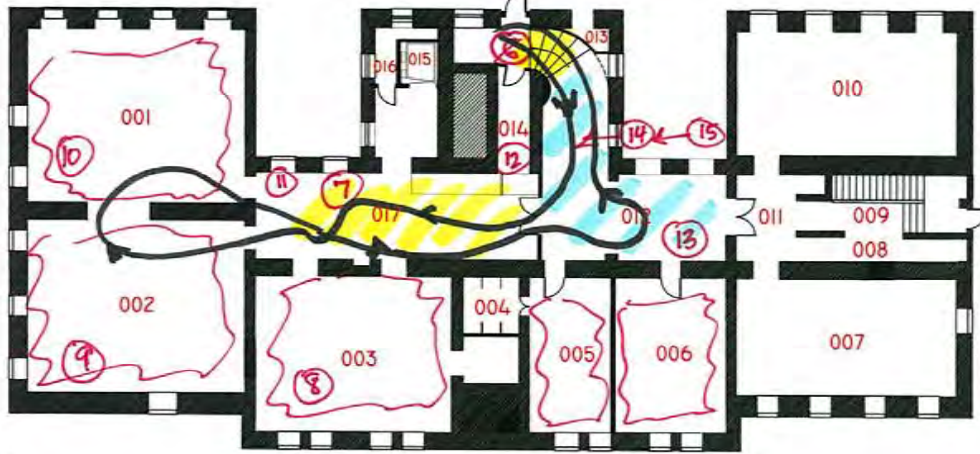
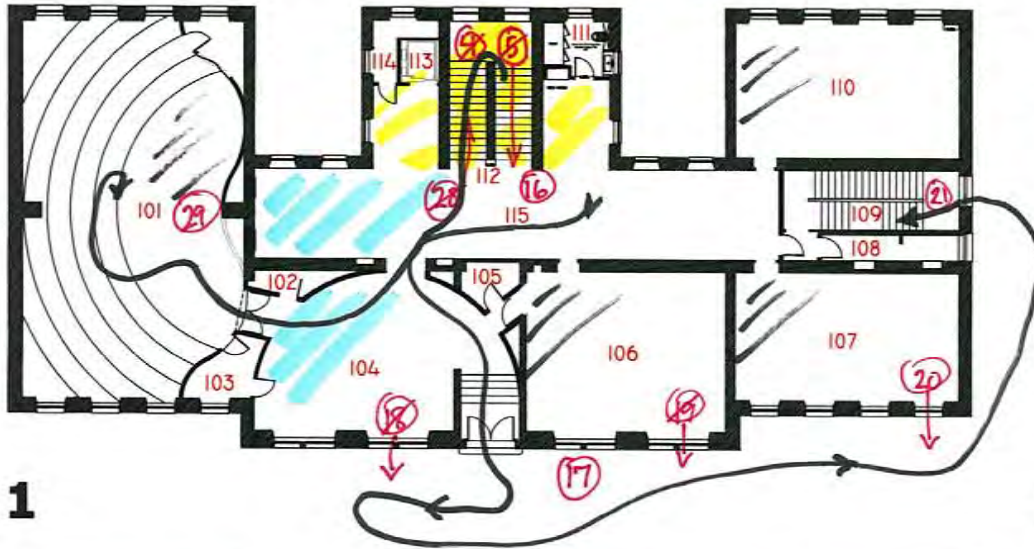


CHOREOGRAPHY OF MUSICIAN B

- 1 SILENT
- 2 CLOUDING
- 3 EXPECTANT
- 4 ECHOING
- 5 CONTRAPUNTAL
- 6 CONTRARY

- 7 DOUBLING
- 8 SILENT AGAIN
- 9 REINFORCING
- 10 STILL BELOW
- 11 RESPONDING

 SLATE
  WOOD
  CONCRETE
  UNFINISHED

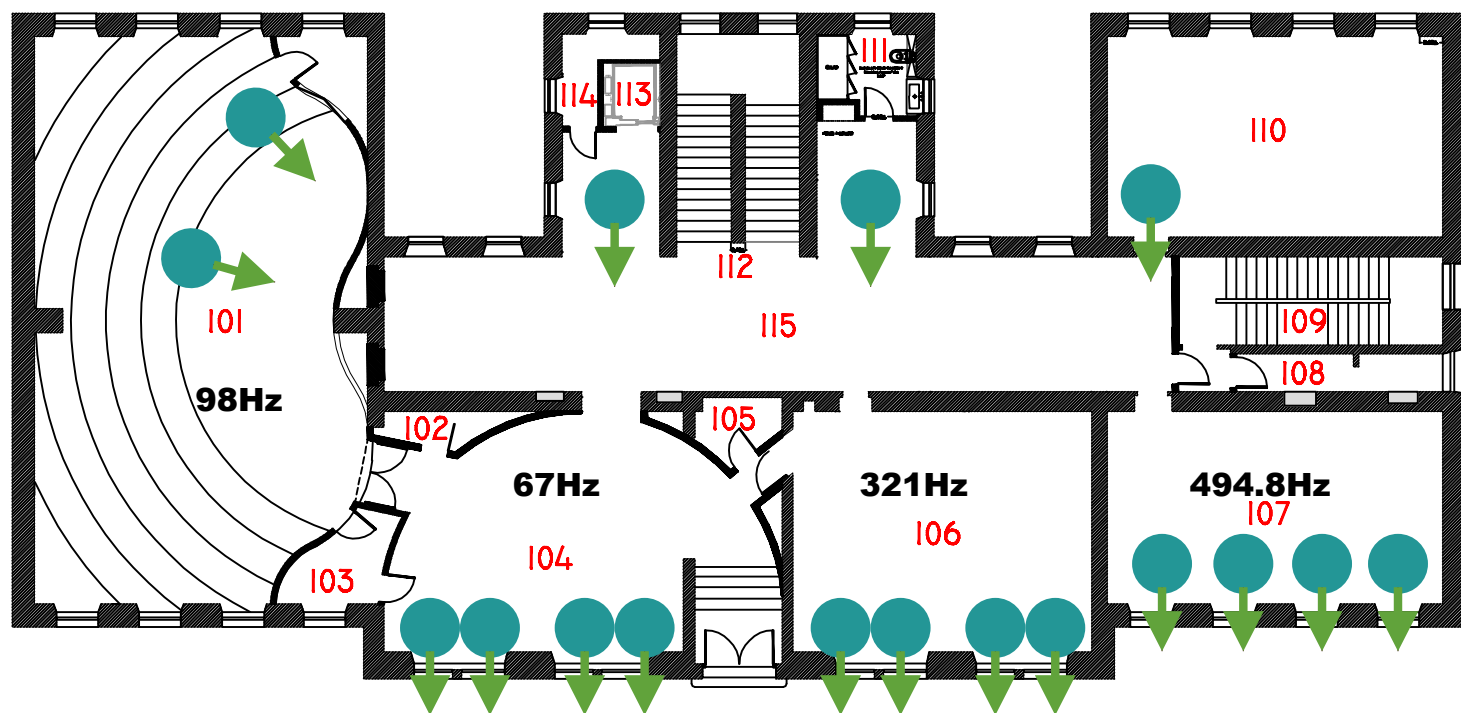


ROOM NUMBERS / CISLA MISTNOSTI

CHOREOGRAPHIC ORDER
 Cellohase May 2010
 75 MINUTES

① AUDIENCE PRESENT
 ② AUDIENCE DISTANT

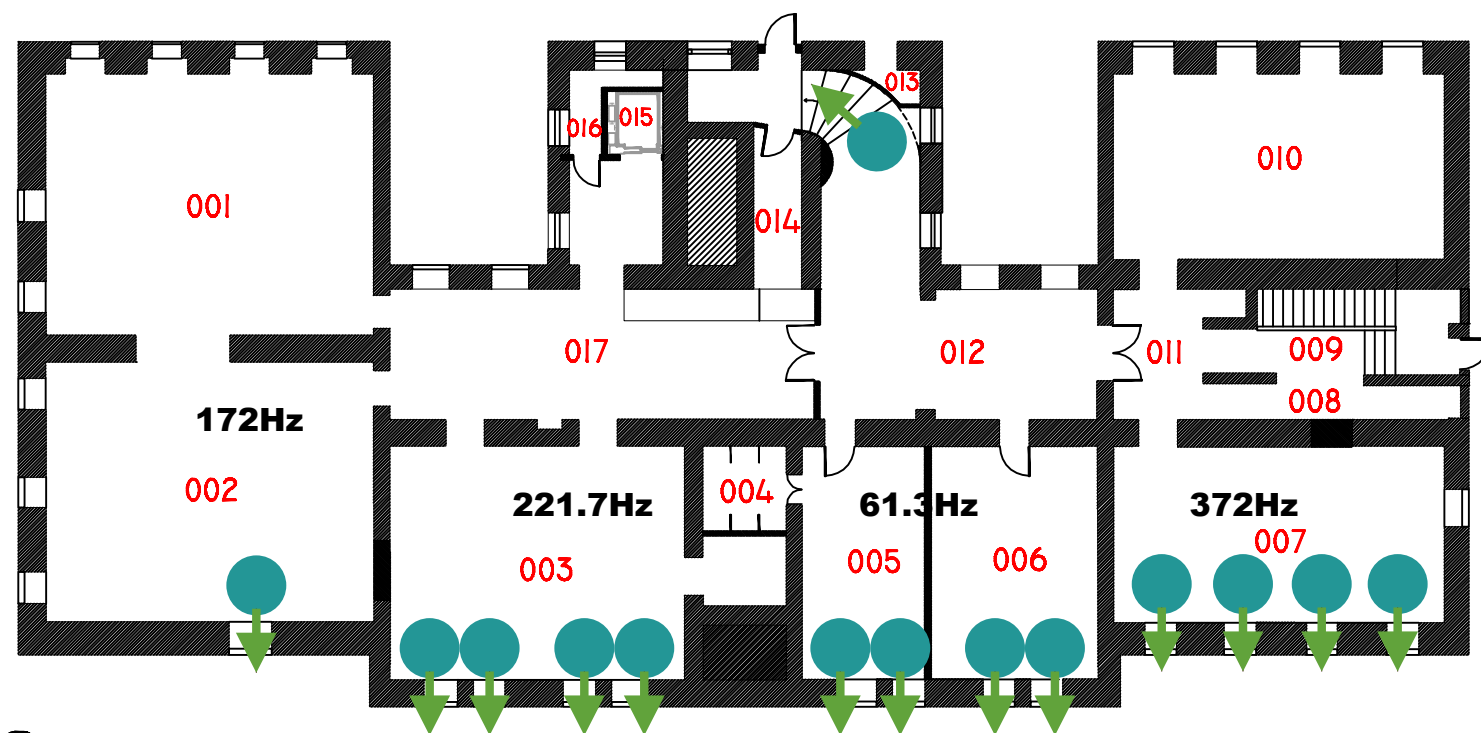
● Indicates placement and direction of singer



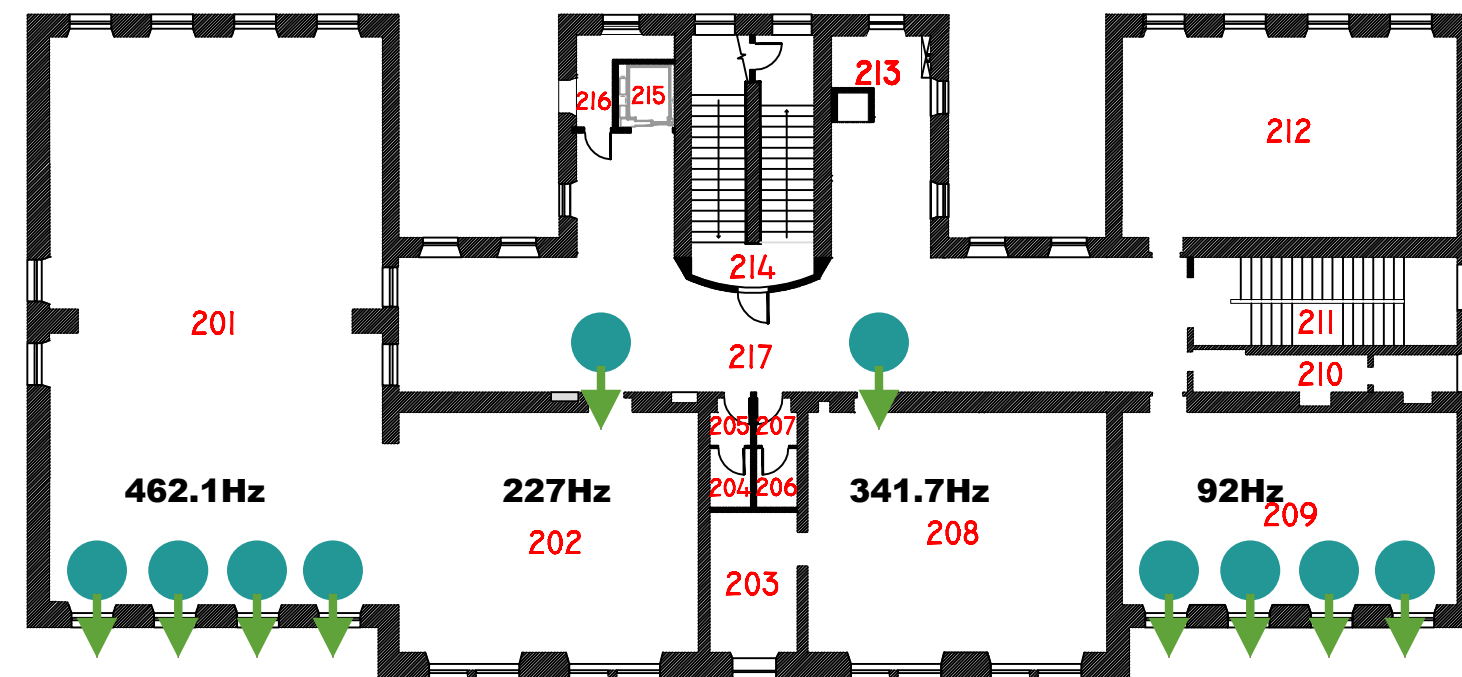
1



3



0



2

ROOM NUMBERS / CISLA MISTNOSTI

Score created Sep 2011 for Institut Slavonice “The Old School”, for a performance led by Hugh Livingston featuring the Slavonice Children’s Choir. Bold numbers indicated the ‘tuning’ for each room, created with localized sound sources. Voices fade in and out according to the score on the following page. The building is largely empty so there is considerable resonance to each space. The audience is entirely outside in the plaza facing the building.

